

How do I get on-the-go access?

The EyeMed Members App can do almost everything that Member Portal can. Find an eye doctor, set an appointment, review your benefits, check claims, find special offers, show your ID card—even store your vision prescriptions and set exam reminders. Download it through the App Store or Google Play.

How do I submit a claim?

When you see one of our in-network eye doctors, you won't have to; we take care of all the paperwork. By the way, you'll save money by staying in-network, too. If you need an out-of-network claim form, log into your member account to find one.

How do I get an ID card replacement or extra cards?

If you lose your card or need extras for your family, log into eyemed.com to print a replacement, or use your digital ID on the app. Here's a tip: you don't even need the card when you visit your eye doctor.

VISION AND YOUR HEALTH

I don't wear glasses and can see fine. Do I still need an eye exam?

Getting an eye exam isn't just about needing glasses. It's also about your health. An eye exam can detect eye health problems like glaucoma or cataracts, but it can also help identify early signs of serious diseases, like high blood pressure, diabetes and high cholesterol—just to name a few.¹

How often should I get an eye exam?

Vision changes can happen slowly—you may not even notice it. Annual eye exams are a good rule of thumb unless your doctor suggests more frequent checks; we suggest making it part of your regular preventive care routine.

At what age should my child first visit the eye doctor?

The American Optometric Association recommends a first eye exam between 6 months and 1 year of age.² The doctor may check for nearsightedness, farsightedness, astigmatism, amblyopia (or "lazy eye"), proper eye movement and eye alignment, and how the eye reacts to light and darkness. They also recommend an exam between the ages of 3 and 5, and every year after that.

My child gets a vision screening at school, so there's no need for an eye exam, right?

A vision screening does not take the place of a comprehensive eye exam. School screenings generally check for color blindness and your child's ability to see far away. A comprehensive exam will evaluate the entire structure of the eye.

**INDEPENDENT
PROVIDER
NETWORK**



LENSCRAFTERS

**PEARLE
VISION**

OPTICAL



Thinking of becoming a member? Learn more at enroll.eyemed.com

Looking to stay healthy with vision? Learn how at eyesiteonwellness.com

Already a member? Manage benefits at eyemed.com

*Discounts are for in-network providers only. Benefits may not be combined with any discount, promotional offering, or other group benefit plans. Additional limitations and exclusions may apply. Log into your member account for full details. ¹ "5 Health Problems Eye Exams Can Detect," YourSightMatters.com, March, 2016. ² "Comprehensive pediatric eye and vision examination"; (2017 guideline brief); American Optometric Association; <https://www.aoa.org/Documents/AOA%20Executive%20Summary%20Pediatric%20Eye%20Exam%20Guidelines%20Revised%2003.05.18.pdf>

BRINGING IT ALL INTO FOCUS

Time for a little Q&A

A LOOK AT THE BENEFITS

What exactly do my EyeMed benefits cover?

If you're thinking about EyeMed, you'll want to connect with your employer to learn about the benefit options. Already a member? The easiest way to find your benefit information is to create a member account on eyemed.com or grab the EyeMed Members App (App Store or Google Play).

Does EyeMed offer any extra discounts?

We sure do. At participating in-network providers, members get 40% off an extra pair of eyeglasses or 20% off a partial pair (lenses only or frames only).* You also get 20% off non-prescription sunglasses and accessories, and discounts on LASIK laser vision correction. Call 1.800.988.4221 to find a LASIK location near you.

Can I use EyeMed benefits online?

Instantly apply your in-network benefits at checkout, with free shipping, free returns and no paperwork at these participating providers: lenscrafters.com, targetoptical.com, ray-ban.com, glasses.com and contactsdirect.com.

Can I get the same kind of care with a retail provider as I can with an independent doctor?

Many optometrists share space with a retail optical store, but operate a separate practice. All of them, wherever they practice, must meet the same state licensing and credentialing requirements. One advantage of using a vision carrier, like EyeMed, is that credentials of every in-network eye doctor are thoroughly examined and verified, so you can feel confident you're getting access to qualified eye doctors.

MEMBER HOW-TO TIPS

How do I use my benefits?

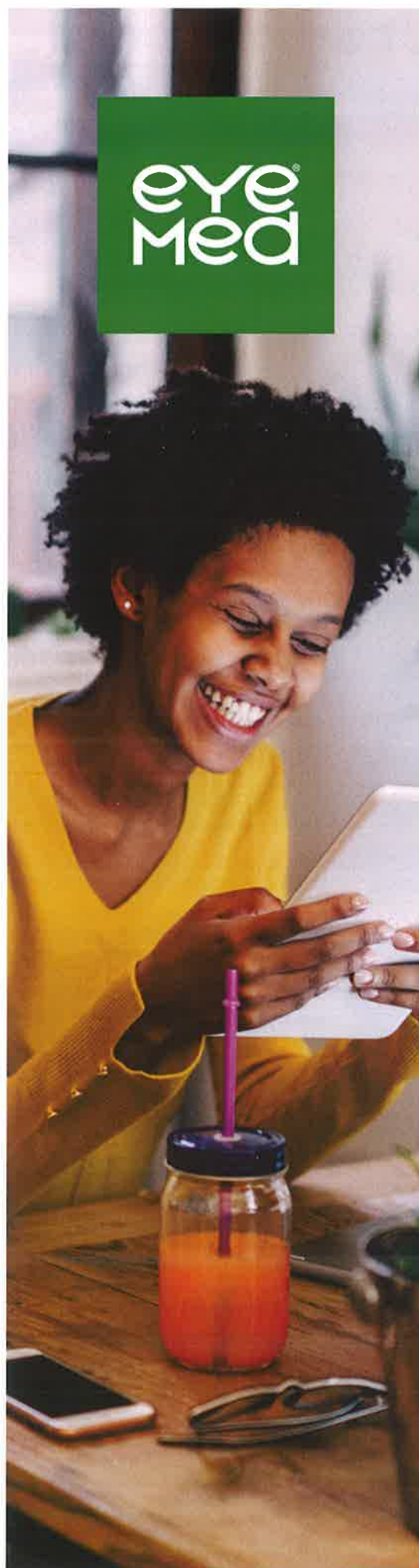
At EyeMed, we're all about easy. Just choose an in-network eye doctor from our Enhanced Provider Search, schedule your visit and go in for care or eyewear. You don't even need your ID card – just give them your name and birthday. When you stay in-network, we'll handle all the paperwork.

How do I find an eye doctor in my network?

The Enhanced Provider Search on Member Portal and the EyeMed Members App has thousands of in-network eye doctors to choose from. Filter your search to find ones near you with the brands, hours and services you most want.



eye
Med



What's in it for me?

Options. It's simple really. We're dedicated to helping you see clearly – and that's why we've built a network that gives you lots of choices and flexibility. You can choose from thousands of independent and retail providers to find the one that best fits your needs and schedule. No matter which one you choose, our plan is designed to be easy-to-use and help you access the care you need. Welcome to EyeMed.



Benefits Snapshot	With EyeMed	Out-of-Network Reimbursement
Exam, with dilation as necessary (once every plan year)	\$0 Co-pay	Up to \$40
Frames (once every other plan year)	\$0 Co-pay, \$130 Allowance; 20% off balance over \$130	Up to \$91
Single Vision Lenses (once every plan year) or Contacts (once every plan year)	\$25 Co-pay \$0 Co-pay, \$130 Allowance; plus balance over \$130	Up to \$30 Up to \$91

And now it's time for the breakdown . . .

Here's an example of what you might pay for a pair of glasses with us vs. what you'd pay without vision coverage. So, let's say you get an eye exam and choose a frame that costs \$163 with single vision lenses that have UV and scratch protection. Now let's see the difference...

78%
SAVINGS
with us*

	With EyeMed	Without Insurance**
Exam	\$10 Co-pay	Exam \$106
Frame	\$163 -\$130 Allowance \$33 -\$6.60 (20% discount off balance) \$26.40	Frame \$163
Lens	\$25 Co-pay \$15 UV treatment add-on +\$15 scratch coating add-on \$50	Lens \$78 \$23 UV treatment add-on +\$25 scratch coating add-on \$126
Total	\$86.40	Total \$395



Download the EyeMed Members App

It's the easy way to view your ID card, see benefit details and find a provider near you.



*This is a snapshot of your benefits. Actual savings will depend on provider, frame and lens selections. **Based on industry averages.



South Holland School District #151

Additional discounts

40% OFF

Complete pair of prescription eyeglasses

20% OFF

Non-prescription sunglasses

20% OFF

Remaining balance beyond plan coverage

These discounts are not insured benefits and are for in-network providers only

Take a sneak peek before enrolling

- You're on the INSIGHT Network
- For a complete list of in-network providers near you, use our Enhanced Provider Locator on eyemed.com or call 1.866.804.0982.
- For LASIK providers, call 1.877.5LASER6.

SUMMARY OF BENEFITS

Vision Care Services	In-Network Member Cost	Out-of-Network Reimbursement
Exam With Dilatation as Necessary	\$10 Co-pay	Up to \$40
Retinal Imaging	Up to \$39	N/A
Frames	\$0 Co-pay, \$130 Allowance, 20% off balance over \$130	Up to \$91
Standard Plastic Lenses		
Single Vision	\$25 Co-pay	Up to \$30
Bifocal	\$25 Co-pay	Up to \$50
Trifocal	\$25 Co-pay	Up to \$70
Standard Progressive Lens	\$80 Co-pay	Up to \$50
Premium Progressive Lens ⁴	\$110 Co-pay - \$200 Co-pay	
Tier 1	\$110 Co-pay	Up to \$50
Tier 2	\$120 Co-pay	Up to \$50
Tier 3	\$135 Co-pay	Up to \$50
Tier 4	\$200 Co-pay	Up to \$50
Lenticular	\$25 Co-pay	Up to \$70
Lens Options		
UV Treatment	\$15	N/A
Tint (Solid and Gradient)	\$15	N/A
Standard Plastic Scratch Coating	\$15	N/A
Standard Polycarbonate—Adults	\$40	N/A
Standard Polycarbonate—Kids under 19	\$40	N/A
Standard Anti-Reflective Coating	\$45	Up to \$5
Premium Anti-Reflective Coating ⁴	\$57 - \$85	
Tier 1	\$57	Up to \$5
Tier 2	\$68	Up to \$5
Tier 3	\$85	Up to \$5
Photochromic/Transitions—Adults	\$75	N/A
Other Add-Ons and Services	20% off retail	N/A
Contact Lens Fit and Follow-Up (Contact lens fit and follow up visits are available once a comprehensive eye exam has been completed)		
Standard Contact Lens Fit & Follow-Up	Up to \$40	N/A
Premium Contact Lens Fit & Follow-Up	10% off retail price	N/A
Contact Lenses (Contact lens allowance includes materials only)		
Conventional	\$0 Co-pay, \$130 Allowance, 15% off balance over \$130	Up to \$91
Disposable	\$0 Co-pay, \$130 Allowance; plus balance over \$130	Up to \$91
Medically Necessary	\$0 Co-pay, paid-in-full	Up to \$210
Laser Vision Correction		
LASIK or PRK from U.S. Laser Network	15% off the retail price or 5% off the promotional price	N/A
Hearing Care		
Hearing Health Care from Amplifon Hearing Network	40% off hearing exams and a low price guarantee on discounted hearing aids	N/A
Frequency		
Examination	Once every plan year	
Lenses (in lieu of contact lenses)	Once every plan year	
Contact Lenses (in lieu of lenses)	Once every plan year	
Frames	Once every other plan year	

Benefits are not provided from services or materials arising from: Orthoptic or vision training, subnormal vision aids and any associated supplemental testing; Aniseikonic lenses, medical and/or surgical treatment of the eye, eyes or supporting structures; Any Vision Examination, or any corrective eyewear required by a Policyholder as a condition of employment; safety eyewear; Services provided as a result of any workers' compensation law, or similar legislation, or required by any governmental agency or program whether federal, state or subdivisions thereof; Plano (non-prescription) lenses; Non-prescription sunglasses; Two pair of glasses in lieu of bifocals; Services or materials provided by any other group benefit plan providing vision care; Services rendered after the date an insured person ceases to be covered under the Policy, except when Vision Materials ordered before coverage ended are delivered, and the services rendered to the insured Person are within 31 days from the date of such order. Lost or broken lenses, frames, glasses or contact lenses will not be replaced except in the next Benefit Frequency when Vision Materials would next become available. Benefits may not be combined with any discount, promotional offering, or other group benefit plans. Standard/Premium Progressive lens not covered - fund as a Bifocal lens. Standard Progressive lens covered - fund Premium Progressive as a Standard. Benefit allowance provides no remaining balance for future use within the same benefits year. Fees charged for a non-insured benefit must be paid in full to the Provider. Such fees or materials are not covered. Underwritten by Fidelity Security Life Insurance Company of Kansas City, Missouri. Fidelity Security Life Policy number VC-19/VC-20, form number M-90B3. This is a snapshot of your benefits. The Certificate of Insurance is on file with your employer. ⁴Premium progressives and premium anti-reflective designations are subject to annual review by EyeMed's Medical Director and are subject to change based on market conditions. Fixed pricing is reflective of brands at the listed product level. All providers are not required to carry all brands at all levels. Not available in all states. Some provisions, benefits, exclusions or limitations listed herein may vary.



We have the network for every pair of eyes

Whatever life sends your way, our vision network has solutions to help you see it to the fullest

"It's hard for me to get away during the workday."



To fit your busy schedule, many eye doctors in our network have weekend and evening hours.

"No thanks, I see perfectly fine."



An eye exam is always a good idea; our network doctors have access to digital technology to help spot potential vision or health problems you may not know about.

"I wear contacts, my wife wants to get LASIK, and two of our kids need glasses."



Our network has a wide variety of independent and retail providers, so everyone in your family can see the doctor they want.

"I'm in an airplane at 30,000 feet and can't get to the eyeglasses store."



You can shop for eyewear online and use your in-network benefits –just like you would at the store.*
*At participating, in-network retailers

LENSCRAFTERS

OPTICAL

Ray-Ban

GLASSES.com

contactsdirect

Find your best fit

These eye doctors are nearby – which is right for you? Check eyemed.com or the EyeMed Members App (App Store or Google Play) for a more advanced search. You'll see who has the hours you like, the services you need and the eyewear you want.



Locations near 60473 for the Insight network

AMERICAS BEST 2060 RIVER OAKS DR CALUMET CITY, IL 60409 708-891-2004	ADVANCED EYECARE OF S HOLLA 835 E 162ND ST SOUTH HOLLAND, IL 60473 708-333-4444	KIRSCHNER VISION GROUP 2156 183RD ST HOMEWOOD, IL 60430 708-957-7700	THE VISION SALON 12812 WESTERN AVE BLUE ISLAND, IL 60406 708-385-0013
LENSCRAFTERS 1320 TORRENCE AVE CALUMET CITY, IL 60409 708-868-5190	SOUTH HOLLAND VISION CTR 353 E 162ND ST SOUTH HOLLAND, IL 60473 708-331-3553	MISSION OPTICAL 18646 DIXIE HWY HOMEWOOD, IL 60430 708-647-6635	VISION QUEST 4902 INDIANAPOLIS BLVD EAST CHICAGO, IN 46312 219-398-2066
PEARLE VISION 18234 HALSTED ST HOMEWOOD, IL 60430 708-798-7711	MIDWEST EYE CENTER SC 1700 E WEST RD CALUMET CITY, IL 60409 708-891-3330	DEREK J DAWSON MD 8256 HOHMAN AVE MUNSTER, IN 46321 219-836-2770	ILLIANA EYECARE 1001 MAIN ST STE 1 DYER, IN 46311 219-322-7800
TARGET OPTICAL 7300 191ST ST TINLEY PARK, IL 60487 815-464-0023	ARQUILLA EYECARE 825 MAPLE AVE HOMEWOOD, IL 60430 708-798-2030	GAILMARD EYE CENTER 630 RIDGE RD MUNSTER, IN 46321 219-836-1738	FAMILY EYECARE ASSOC 19950 GOVERNORS HWY STE 202 OLYMPIA FIELDS, IL 60461 708-481-4600
SEARS OPTICAL CHICAGO RIDGE MALL 6501 95TH ST CHICAGO RIDGE, IL 60415 708-499-4676	SVS VISION 2 RIVER PL STE F LANSING, IL 60438 708-474-7404	FRANCISCAN PHYSICIAN NETWOR 7905 CALUMET AVE STE 1 MUNSTER, IN 46321 219-836-5800	FRANCISCAN PHYSICIAN NETWOR 3700 W 203RD ST STE 103 OLYMPIA FIELDS, IL 60461 219-878-5035
JCPENNEY OPTICAL 200 RIVER OAKS ARCADE DR CALUMET CITY, IL 60409 708-868-4286	DEBOER FAMILY EYE CARE 17926 TORRENCE AVE LANSING, IL 60438 708-474-5700	GREENSPAN OPTOMETRIC ASSOC 366 DIXIE HWY CHICAGO HEIGHTS, IL 60411 708-754-0080	TICHO EYE ASSOCIATES 20201 CRAWFORD AVE OLYMPIA FIELDS, IL 60461 708-423-4070
AMERICAS BEST 17850 HALSTED ST HOMEWOOD, IL 60430 708-799-3402	MYEYEDR 585 RIVER OAKS W CALUMET CITY, IL 60409 708-891-8600	VISION QUEST 1229 165TH ST HAMMOND, IN 46320 219-931-8733	METROPOLITAN EYECARE CTR 3406 VOLLMER RD OLYMPIA FIELDS, IL 60461 708-748-6016
AMERICAS BEST 11750 S MARSHFIELD AVE CHICAGO, IL 60643 773-568-3479	FOR EYES OPTICAL CO 1530 TORRENCE AVE CALUMET CITY, IL 60409 708-868-5807	TICHO EYE ASSOCIATES 801 MACARTHUR BLVD STE 302 MUNSTER, IN 46321 219-836-7990	UNIVERSITY EYE INSTITUTE PC 2720 169TH ST HAMMOND, IN 46323 219-845-2020
PEARLE VISION CENTER 14702 CICERO AVE MIDLOTHIAN, IL 60445 708-687-2115	DOLTON OPTOMETRIC 14223 MARTIN LUTHER KING JR DR DOLTON, IL 60419 708-849-0690	GILLESPIE OPTICAL 9376 CALUMET AVE MUNSTER, IN 46321 708-474-1145	FAMILY EYECARE CTR 8417 KENNEDY AVE HIGHLAND, IN 46322 219-838-2020
AMERICAS BEST 4541 211TH ST MATTESON, IL 60443 708-481-1534	MYEYEDR 3224 RIDGE RD STE 102 LANSING, IL 60438 708-895-4422	SOUTH SHORE EYE CARE 10413 CALUMET AVE MUNSTER, IN 46321 219-595-0580	FOR EYES OPTICAL 2318 W 95TH ST CHICAGO, IL 60643 773-298-8536
AMERICAS BEST 1753 E 95TH ST STE B-100 CHICAGO, IL 60617 773-364-4938	ROBY OD & ASSOCIATES PC 15347 BROADWAY AVE HARVEY, IL 60426 708-331-4441	45TH AVENUE OPTICAL 1650 45TH ST STE I MUNSTER, IN 46321 219-924-8012	SHELLE OPTICAL 170 W SAUK TRL CHICAGO HEIGHTS, IL 60411 708-754-7111
AMERICAS BEST 16205 HARLEM AVE STE B TINLEY PARK, IL 60477 708-614-9301	GILLESPIE OPTICAL 3319 RIDGE RD LANSING, IL 60438 708-474-1145	ROBERT L YOUNG MD INC 1646 45TH ST MUNSTER, IN 46321 219-924-3700	MOSES EYECARE CENTERS 2940 HIGHWAY AVE HIGHLAND, IN 46322 219-838-3297
AMERICAS BEST 205 W 87TH ST STE D CHICAGO, IL 60620 773-496-5433	RONALD D STANIS OD 7550 HOHMAN AVE STE 900 MUNSTER, IN 46321 219-513-0631	MEYER EYECARE 13114 WESTERN AVE BLUE ISLAND, IL 60406 708-388-1228	LONGE OPTICAL 9521 INDIANAPOLIS BLVD STE K HIGHLAND, IN 46322 219-924-6281

Eye exams offered by DPA/DTA or DEA-certified optometrists and ophthalmologists. All certifications are verified by and NCQA-accredited credentials verification organization. Locations subject to change. When making your appointment, please confirm all discounts and services are offered.

INDEPENDENT
PROVIDER
NETWORK



LENSCRAFTERS

PEARLE
VISION

OPTICAL